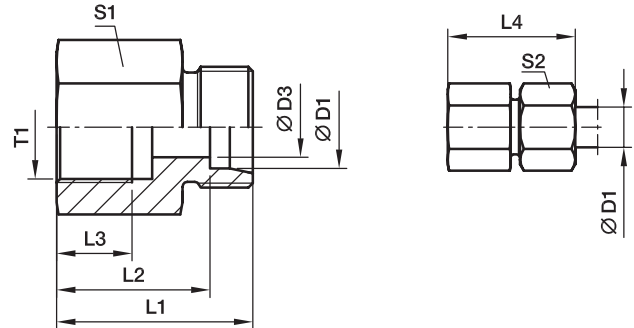


## GAI-M Female connector

Female metric thread (ISO 9974-1) / EO 24° cone end



Series	D1	T1	D3	L1	L2	L3	L4	S1	S2	Weight g/1 piece	Order code*	PN (bar) <sup>1)</sup>	
												CF	71
L <sup>3)</sup>	06	M 10×1.0	4	26.5	19.5	8.0	34	14	14	18	<b>GAI06LM</b>	315	315
	08	M 12×1.5	6	31.0	24.0	12.0	39	17	17	32	<b>GAI08LM</b>	315	315
	10	M 14×1.5	8	32.0	25.0	12.0	40	19	19	39	<b>GAI10LM</b>	315	315
	12	M 16×1.5	10	33.0	26.0	12.0	41	22	22	52	<b>GAI12LM</b>	315	315
	15	M 18×1.5	12	35.0	28.0	12.0	43	24	27	68	<b>GAI15LM</b>	315	315
	18	M 22×1.5	15	37.0	29.5	14.0	46	30	32	111	<b>GAI18LM</b>	315	315
	22	M 26×1.5	19	42.0	34.5	16.0	51	32	36	123	<b>GAI22LM</b>	160	160
	28	M 33×2.0	24	45.0	37.5	18.0	54	41	41	211	<b>GAI28LM</b>	160	160
	35	M 42×2.0	30	51.0	40.5	20.0	62	55	50	459	<b>GAI35LM</b>	160	160
	42	M 48×2.0	36	53.0	42.0	22.0	65	60	60	522	<b>GAI42LM</b>	160	160
S <sup>4)</sup>	06	M 12×1.5	4	33.0	26.0	12.0	41	17	17	35	<b>GAI06SM</b>	400	400
	08	M 14×1.5	5	33.0	26.0	12.0	41	17	19	42	<b>GAI08SM</b>	400	400
	10	M 16×1.5	7	34.0	26.5	12.0	43	22	22	58	<b>GAI10SM</b>	400	400
	12	M 18×1.5	8	35.0	27.5	12.0	44	24	24	70	<b>GAI12SM</b>	400	400
	14	M 20×1.5	10	39.0	31.0	14.0	49	27	27	95	<b>GAI14SM</b>	400	400
	16	M 22×1.5	12	39.0	30.5	14.0	49	30	30	114	<b>GAI16SM</b>	400	400
	20	M 27×2.0	16	45.0	34.5	16.0	56	36	36	189	<b>GAI20SM</b>	315	315
	25	M 33×2.0	20	49.0	37.0	18.0	61	41	46	235	<b>GAI25SM</b>	315	315
	30	M 42×2.0	25	55.0	41.5	20.0	68	55	50	490	<b>GAI30SM</b>	315	315
	38	M 48×2.0	32	59.0	43.0	22.0	74	60	60	597	<b>GAI38SM</b>	250	250

<sup>1)</sup> Pressure shown = item deliverable

<sup>3)</sup> L = light series; <sup>4)</sup> S = heavy series

$\frac{\text{PN (bar)}}{10} = \text{PN (MPa)}$

Delivery without nut and ring. Information on ordering complete fittings see page 17.

Order code suffixes		
Material	Suffix surface and material	Example
Steel, zinc plated, Cr(VI)-free	CFX	GAI16SMCFX
Stainless Steel	71X	GAI16SM71X

\*Please add the **suffixes** below according to the material/surface required.