

The direct operated pressure relief valves series RDM are in sandwich design for easy configuration of stock systems. They relieve the pressure of the hydraulic system to the adjusted value.

**Function**

PT... pressure is relieved from P to T.

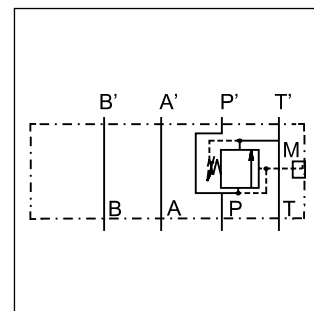
TT... pressure pre-loading in T.

**Features**

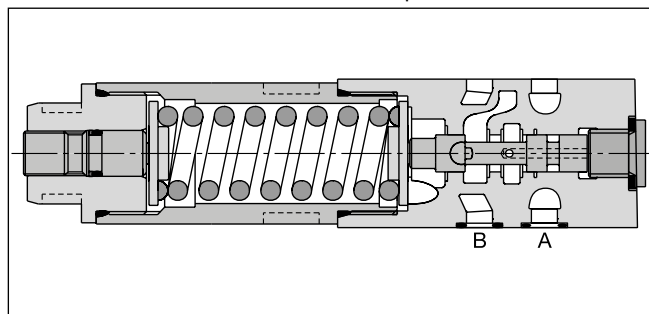
- The direct operated, cushioned piston design results in fast response, low leakage and minimal hysteresis.
- Pressure settings:  
bar 25, 64, 160, 210, 350 for RDM2,  
bar 19, 50, 100, 150, 210 for RDM3.
- Adjustment modes:  
- Hexagon socket  
- Cylinder lock  
- Turning knob
- Gauge port
- RDM2 - NG06 (CETOP 03)  
RDM3 - NG10 (CETOP 05)



RDM2



Example PT



RDM2

**Ordering code**

<b>RD</b>	<b>M</b>					<b>V</b>		
Pressure relief valve, direct operated	Manapak	Size	Pressure relief	Pressure range	Adjustment	Seal FPM	Gauge port	Design series (not required for ordering)

Code	Size
2	<b>NG06</b>
3	<b>NG10</b>

Code	Pressure relief
PT	<b>P</b>
TT <sup>1)</sup>	T

Code	Gauge port
G <sup>2)</sup>	<b>G<sup>1</sup>/<sub>4</sub></b>
C	Coupling M16

Code	Adjustment
S	<b>Hexagon socket</b>
L	Cylinder lock
K	Turning knob <sup>3)</sup>

Pressure range	
Code	RDM2
02	1.5 to 25 bar
<b>06</b>	<b>1.5 to 64 bar</b>
<b>16</b>	<b>3 to 160 bar</b>
<b>21</b>	<b>3 to 210 bar</b>
35	5 to 350 bar
Code	RDM3
01	1.5 to 19 bar
05	1.5 to 50 bar
10	3 to 100 bar
15	3 to 150 bar
21	3 to 210 bar

**Bold letters = Short-term availability**

<sup>1)</sup> NG06 only, max. 160 bar.

<sup>2)</sup> Standard in housing.

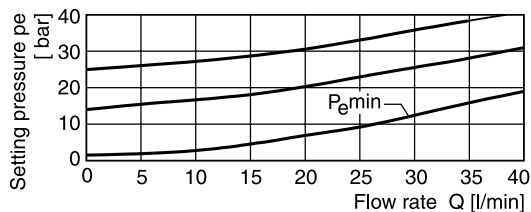
<sup>3)</sup> NG06 only.

**Technical data**

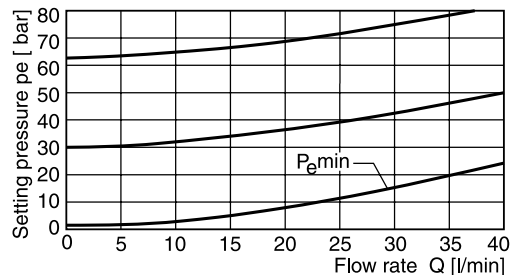
General			
Series		<b>RDM2</b>	<b>RDM3</b>
Size		<b>NG06</b>	<b>NG10</b>
Mounting interface		ISO 4401	
Weight	[kg]	1.3	2.6
MTTF <sub>D</sub> value	[years]	150	
Ambient temperature	[°C]	-20...+60	
Hydraulic			
Max. operating pressure	P, A, B [bar]	350	315
	T [bar]	50	10
Fluid		Hydraulic oil according to DIN 51524	
Fluid temperature	[°C]	-20...+70	
Viscosity, permitted	[cSt] / [mm <sup>2</sup> /s]	20 ... 400	
Viscosity, recommended	[cSt] / [mm <sup>2</sup> /s]	30 ... 80	
Filtration		ISO 4406 (1999); 18/16/13	
Max. flow	[l/min]	40	80

**Performance curves**

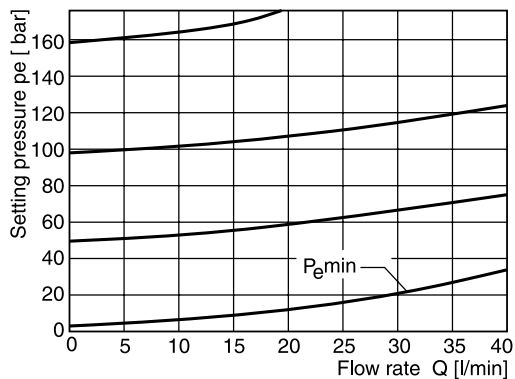
**RDM2 02**



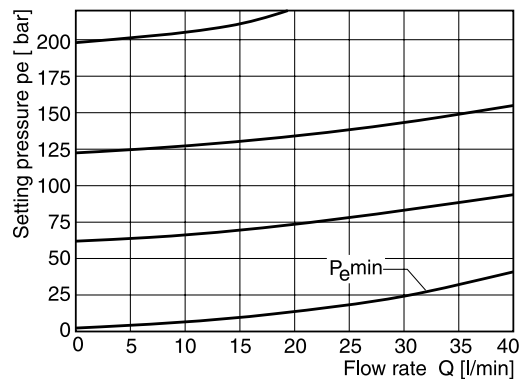
**RDM2 06**



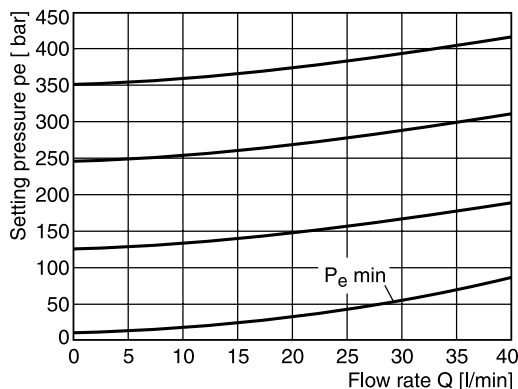
**RDM2 16**



**RDM2 21**



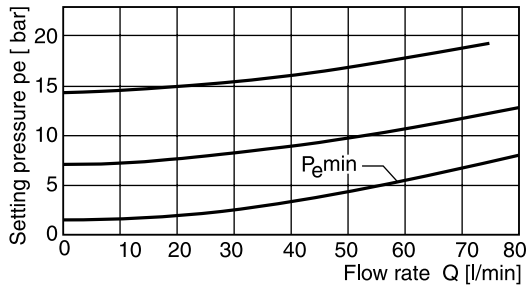
**RDM2 35**



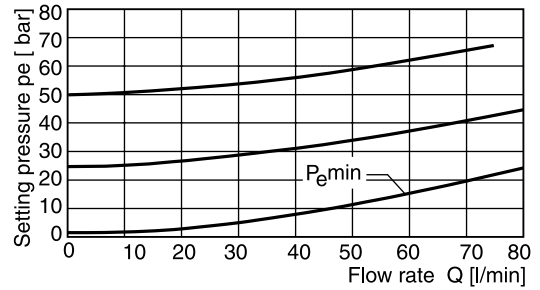
All characteristic curves measured with HLP46 at 50 °C.

7

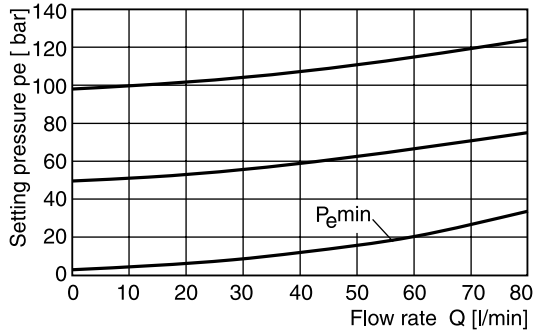
**RDM3 01**



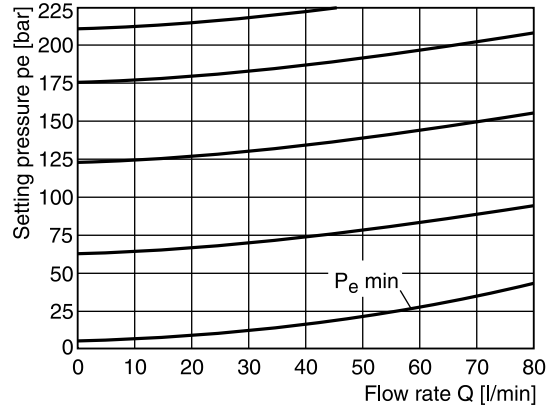
**RDM3 05**



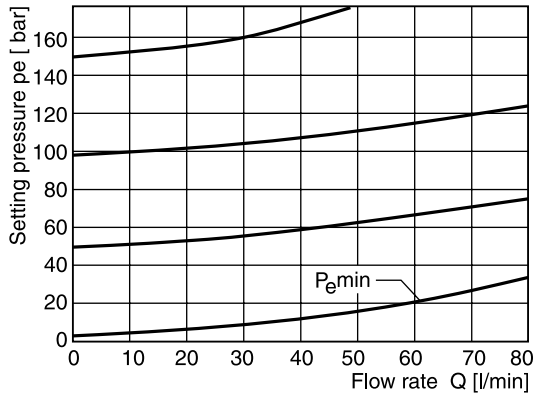
**RDM3 10**



**RDM3 21**



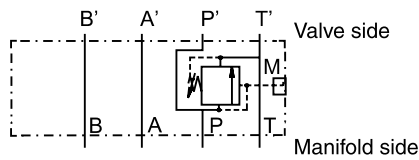
**RDM3 15**



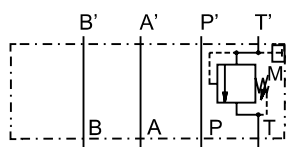
All characteristic curves measured with HLP46 at 50 °C.

**Schematics**

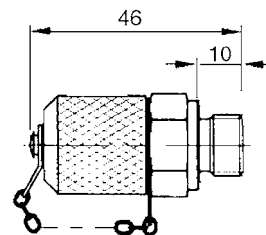
**RDM\*PT**



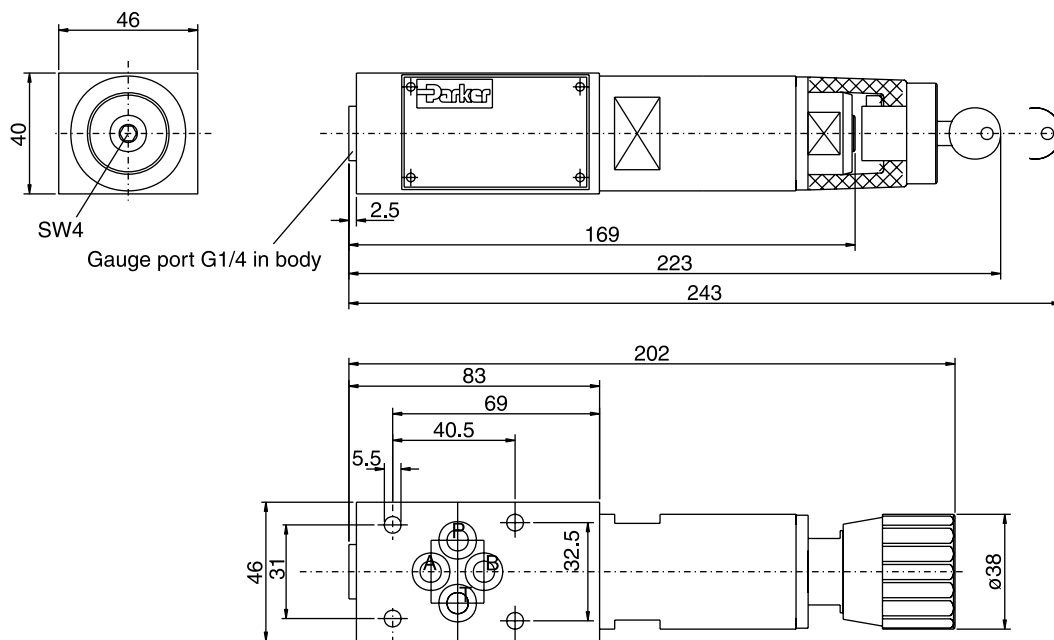
**RDM\*TT**



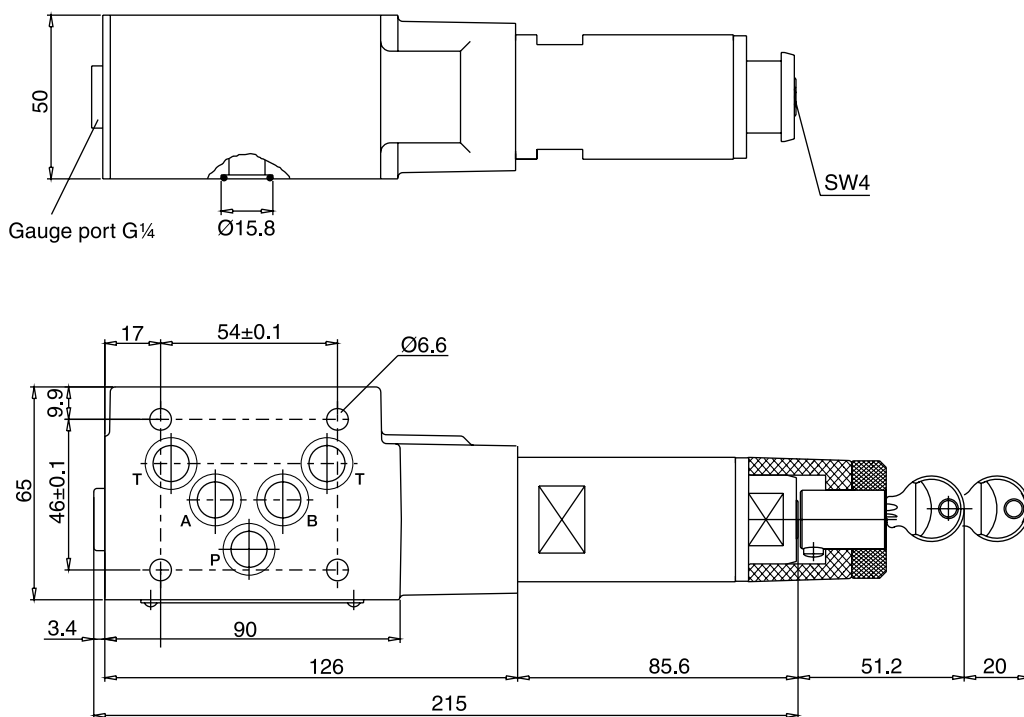
**Gauge port option C**



**RDM2**



**7 RDM3**



Seal kit order code		
Seal	RDM2	RDM3
V	SK-RDM2-V	SK-RDM3-V

