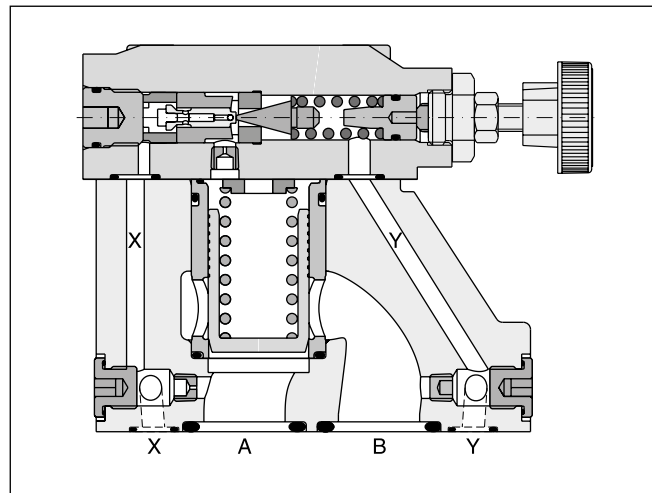
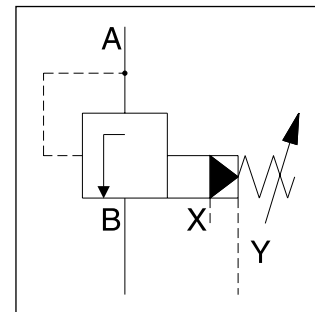


Subplate mounted sequence valves series R4S enable a hydraulic system to operate in a pressure sequence. When the system pressure reaches the setting pressure the valve opens and permits flow to the secondary sub-system.

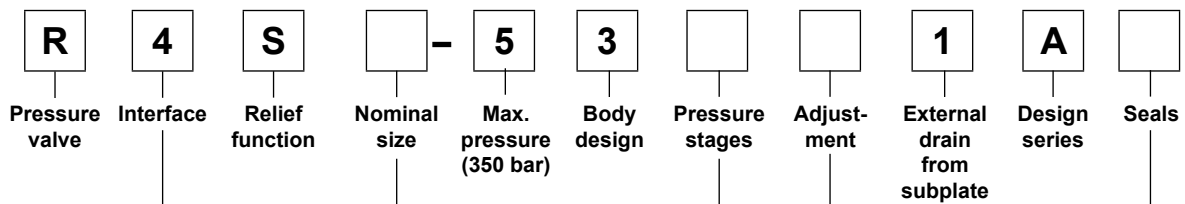
Features

- Pilot operated sequence valve
- Subplate mounting acc. to ISO 5781
- 3 pressure stages
- 3 adjustment modes:
 - hand knob
 - acorn nut with lead seal
 - cylinder lock



4

Ordering code



| Code | Interface |
|------|----------------------------|
| 4 | Subplate mounting ISO 5781 |

| Code | Nominal size |
|------|--------------|
| 03 | NG10 |
| 06 | NG25 |
| 10 | NG32 |

| Code | Pressure stages |
|------|-----------------|
| 1 | up to 105 bar |
| 3 | up to 210 bar |
| 5 | up to 350 bar |

| Code | Seals |
|------|-------|
| 1 | NBR |
| 5 | FPM |

| Code | Adjustment |
|------|-------------------------------------|
| 1 | Hand knob 32 mm diameter (standard) |
| 3 | Acorn nut with lead seal |
| 4 | Cylinder lock |

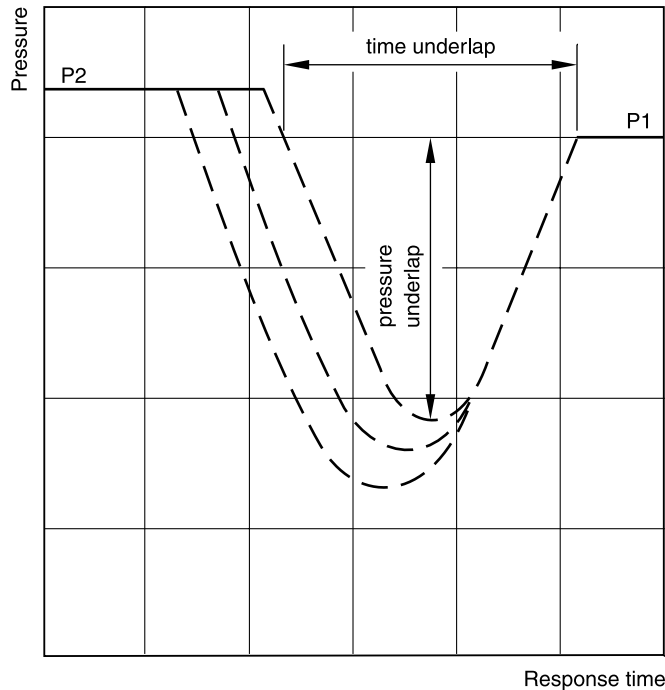
Technical Data / Characteristics Curve

Technical data

| General | | | NG10 | NG25 | NG32 |
|----------------------------------|---|--|------|------|------|
| Nominal size | | | | | |
| Interface | Subplate mounting acc. ISO 5781 | | | | |
| Mounting position | Unrestricted, horizontal mounting preferred | | | | |
| Ambient temperature | [°C] | -20...+60 | | | |
| MTTF _D value | [years] | 75 | | | |
| Weight | [kg] | 2.7 | 4.5 | 6.0 | |
| Hydraulic | | | | | |
| Max. operating pressure | [bar] | Ports A, B and X 350, port Y depressurized | | | |
| Pressure stages | [bar] | 105, 210, 350 | | | |
| Nominal flow | [l/min] | 150 | 350 | 650 | |
| Fluid | Hydraulic oil according to DIN 51524 | | | | |
| Viscosity, permitted recommended | [cSt] / [mm ² /s] | 20 ... 400 | | | |
| | [cSt] / [mm ² /s] | 30 ... 80 | | | |
| Fluid temperature | [°C] | -20...+70 (NBR: -25...+70) | | | |
| Filtration | ISO 4406 (1999); 18/16/13 | | | | |

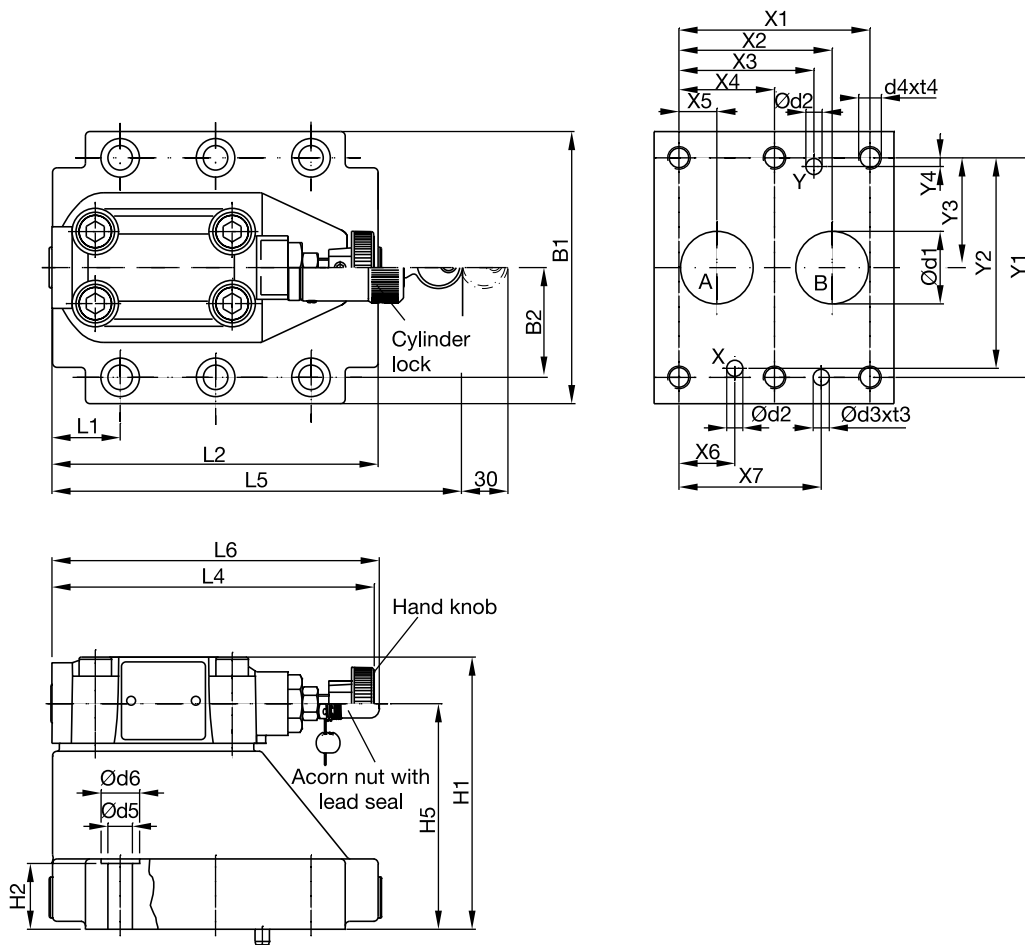
4

Typical pressure characteristics at closing point



P1 = setting pressure
P2 = operating pressure

Time and pressure underlap depend on the characteristics of the specific system.



4

| NG | ISO-code | x1 | x2 | x3 | x4 | x5 | x6 | x7 | y1 | y2 | y3 | y4 | y5 | y6 |
|----|-----------------|------|------|------|------|------|------|------|------|------|------|-----|----|----|
| 10 | 5781-06-07-0-00 | 42.9 | 35.8 | 21.5 | – | 7.2 | 21.5 | 31.8 | 66.7 | 58.8 | 33.4 | 7.9 | – | – |
| 25 | 5781-08-10-0-00 | 60.3 | 49.2 | 39.7 | – | 11.1 | 20.6 | 44.5 | 79.4 | 73 | 39.7 | 6.4 | – | – |
| 32 | 5781-10-13-0-00 | 84.2 | 67.5 | 59.5 | 42.1 | 16.7 | 24.6 | 62.7 | 96.8 | 92.8 | 48.4 | 3.8 | – | – |

Tolerance at X and Y pin holes and screw holes ± 0.1 , at port holes ± 0.2 .

| NG | ISO-code | B1 | B2 | H1 | H2 | H3 | H4 | H5 | H6 | L1 | L2 | L3 | L4 | L5 | L6 |
|----|-----------------|------|-------|-------|----|----|----|------|----|------|-------|----|-----|-----|-------|
| 10 | 5781-06-07-0-00 | 87.3 | 33.35 | 83 | 21 | – | – | 62.5 | – | 25 | 90.8 | – | 143 | 181 | 144.8 |
| 25 | 5781-08-10-0-00 | 105 | 39.7 | 107.5 | 29 | – | – | 87 | – | 30.9 | 123 | – | 143 | 181 | 144.8 |
| 32 | 5781-10-13-0-00 | 120 | 48.4 | 120 | 30 | – | – | 99.5 | – | 29.8 | 143.5 | – | 143 | 181 | 144.8 |

| NG | ISO-code | d1max | d2max | d3 | t3 | d4 | t4 | d5 | d6 | Subplate ¹⁾ |
|----|-----------------|-------|-------|-----|----|-----|----|------|----|------------------------|
| 10 | 5781-06-07-0-00 | 15 | 7 | 7.1 | 8 | M10 | 16 | 10.8 | 17 | SPP 3M6B 910 |
| 25 | 5781-08-10-0-00 | 23.4 | 7.1 | 7.1 | 8 | M10 | 18 | 10.8 | 17 | SPP 6M8B 910 |
| 32 | 5781-10-13-0-00 | 32 | 7.1 | 7.1 | 8 | M10 | 20 | 10.8 | 17 | SPP 10M12B 910 |

| NG | Bolt kit | Kit | | Surface finish | | |
|----|----------|-------------------------|------------------|----------------|-------------|--|
| | | NBR | FPM | | | |
| 10 | BK505 | 4x M10x35 ISO 4762-12.9 | 63 Nm ± 15 % | S26-58507-0 | S26-58507-5 | |
| 25 | BK485 | 4x M10x45 ISO 4762-12.9 | 63 Nm ± 15 % | S26-58475-0 | S26-58475-5 | |
| 32 | BK506 | 6x M10x45 ISO 4762-12.9 | 63 Nm ± 15 % | S26-58508-0 | S26-58508-5 | |

¹⁾ Details see chapter 12, series SPP.