

# Ball Valves, Standard Series

This range of valves with **fluoropolymer seals**, available in compact, standard and lockable series, covers many **industrial applications** for which the fluids conveyed and working temperatures require this seal material.

## Product Advantages

**Optimised Installation**

- Full fluid flow
- Long or butterfly lever
- Corrosion resistance
- A lockable version for operational safety
- Good value/performance ratio

**Wide Compatibility**

- Numerous compatible fluids
- Can be used for low and medium pressure applications
- Surface treatment for corrosion protection



Machine Tool  
Agricultural Machinery  
Textile  
Pneumatics  
Plumbing  
Air Conditioning  
Heating

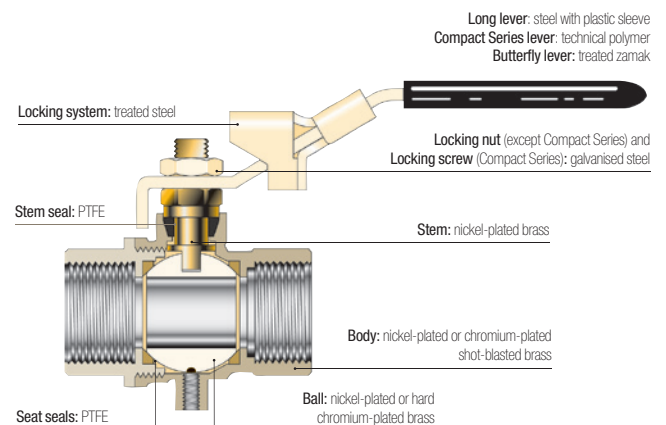
Applications

## Technical Characteristics

| Model               | Standard and Lockable Series   | Compact Series |
|---------------------|--|----------------|
| Compatible Fluids   | Compressed air, gas, water, water vapour, oil and all fluids compatible with the component materials |                |
| Working Pressure    | 0 to 30 bar  | 0 to 35 bar    |
| Working Temperature | -20°C to +130°C  | -10°C to +90°C |

Reliable performance is dependent upon the type of fluid conveyed.

### Component Materials



### Silicone-free

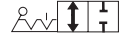
### Regulations

**Industrial**  
**DI:** 97/23/EC (module PED A - EC diameters greater than 25 mm)  
**DI:** Machinery Directive 2006/42/EC  
**DI:** 2002/95/EC (RoHS)  
**RG:** 1907/2006 (REACH)  
**DI:** 89/392/EC

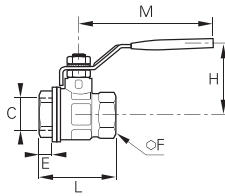
# Standard Series

## 4902

### 2/2 Standard In-Line Ball Valve, Female BSPP Thread



Nickel-plated brass, PTFE

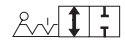


| C    | DN  |                             | PN | E    | F   | H   | L    | M   | kg    |
|------|-----|-----------------------------|----|------|-----|-----|------|-----|-------|
| G1/4 | 10  | <a href="#">4902 10 13</a>  | 30 | 11   | 20  | 43  | 51.5 | 98  | 0.154 |
| G3/8 | 10  | <a href="#">4902 10 17</a>  | 30 | 11.4 | 20  | 43  | 51.5 | 98  | 0.138 |
| G1/2 | 15  | <a href="#">4902 15 21</a>  | 30 | 13.5 | 25  | 47  | 55   | 98  | 0.202 |
| G3/4 | 20  | <a href="#">4902 20 27</a>  | 30 | 12.5 | 31  | 58  | 57.5 | 122 | 0.322 |
| G1   | 25  | <a href="#">4902 25 34</a>  | 30 | 15   | 38  | 60  | 69.5 | 122 | 0.468 |
| G1¼  | 32  | <a href="#">4902 32 42*</a> | 25 | 17   | 48  | 77  | 81.5 | 153 | 0.794 |
| G1½  | 40  | <a href="#">4902 40 49*</a> | 25 | 18   | 54  | 83  | 95   | 153 | 1.082 |
| G2   | 50  | <a href="#">4902 50 48*</a> | 25 | 22   | 66  | 95  | 113  | 162 | 1.787 |
| G2½  | 65  | <a href="#">4902 65 47*</a> | 30 | 22   | 85  | 132 | 136  | 255 | 4.500 |
| G3   | 80  | <a href="#">4902 80 46*</a> | 30 | 25   | 99  | 140 | 157  | 255 | 5.840 |
| G4   | 100 | <a href="#">4902 01 45*</a> | 30 | 29   | 125 | 154 | 191  | 255 | 9.040 |

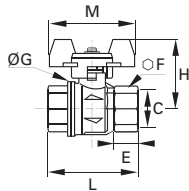
\*Models with CE marking  
Model from 2½": double stem seal in FPM  
Working temperature: -40°C to +170°C

## BVGT4-C

### 2/2 Standard In-Line Ball Valve, Female BSPP Thread



Sand-blasted nickel-plated brass, PTFE



| C    | DN |                            | E  | F  | G    | H  | L  | M  | kg    |
|------|----|----------------------------|----|----|------|----|----|----|-------|
| G1/4 | 8  | <a href="#">BVGT4-1/4C</a> | 9  | 20 | 25   | 40 | 39 | 50 | 0.130 |
| G3/8 | 10 | <a href="#">BVGT4-3/8C</a> | 9  | 20 | 25   | 40 | 39 | 50 | 0.120 |
| G1/2 | 15 | <a href="#">BVGT4-1/2C</a> | 11 | 25 | 32.5 | 44 | 50 | 50 | 0.180 |
| G3/4 | 20 | <a href="#">BVGT4-3/4C</a> | 12 | 31 | 39   | 49 | 54 | 50 | 0.265 |
| G1   | 25 | <a href="#">BVGT4-1C</a>   | 14 | 38 | 47.5 | 53 | 67 | 50 | 0.390 |

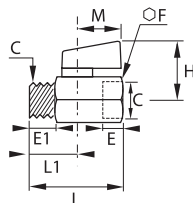
Compact lever

## 4991

### 2/2 Standard Compact In-Line Ball Valve, Male/Female BSPP Thread



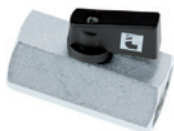
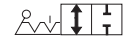
Chromium-plated brass, PTFE



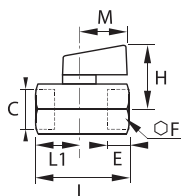
| C    | DN |                            | E  | E1 | F  | H  | L    | L1   | M  | kg    |
|------|----|----------------------------|----|----|----|----|------|------|----|-------|
| G1/8 | 6  | <a href="#">4991 00 10</a> | 10 | 10 | 21 | 30 | 41.5 | 10   | 24 | 0.091 |
| G1/4 | 8  | <a href="#">4991 00 13</a> | 11 | 11 | 21 | 30 | 41.5 | 11   | 24 | 0.087 |
| G3/8 | 8  | <a href="#">4991 00 17</a> | 11 | 11 | 21 | 30 | 41.5 | 10.5 | 24 | 0.087 |
| G1/2 | 10 | <a href="#">4991 00 21</a> | 13 | 13 | 25 | 32 | 49   | 12.5 | 24 | 0.134 |

## 4992

### 2/2 Standard Compact In-Line Ball Valve, Female BSPP Thread



Chromium-plated brass, PTFE



| C    | DN |                            | E  | F  | H  | L    | L1   | M  | kg    |
|------|----|----------------------------|----|----|----|------|------|----|-------|
| G1/8 | 6  | <a href="#">4992 00 10</a> | 10 | 21 | 30 | 41.5 | 10   | 24 | 0.110 |
| G1/4 | 8  | <a href="#">4992 00 13</a> | 11 | 21 | 30 | 41.5 | 11   | 24 | 0.106 |
| G3/8 | 8  | <a href="#">4992 00 17</a> | 11 | 21 | 30 | 41.5 | 10.5 | 24 | 0.094 |
| G1/2 | 10 | <a href="#">4992 00 21</a> | 13 | 25 | 32 | 49   | 12.5 | 24 | 0.142 |