

Ball Valves, Standard Series

This range of valves with **fluoropolymer seals**, available in compact, standard and lockable series, covers many **industrial applications** for which the fluids conveyed and working temperatures require this seal material.

Product Advantages

Optimised Installation

- Full fluid flow
- Long or butterfly lever
- Corrosion resistance
- A lockable version for operational safety
- Good value/performance ratio

Wide Compatibility

- Numerous compatible fluids
- Can be used for low and medium pressure applications
- Surface treatment for corrosion protection



Applications

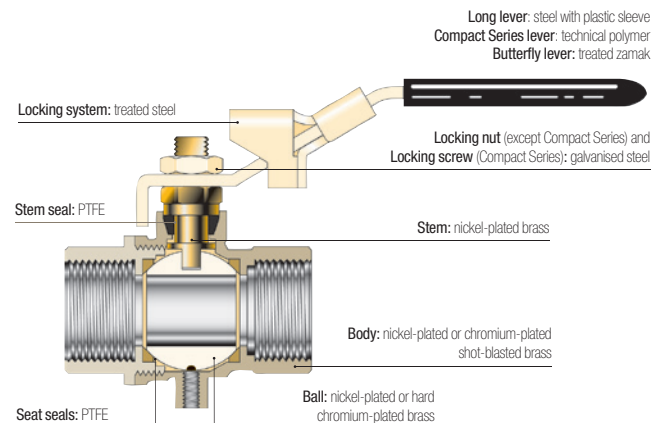
- Machine Tool
- Agricultural Machinery
- Textile
- Pneumatics
- Plumbing
- Air Conditioning
- Heating

Technical Characteristics

Model	Standard and Lockable Series	Compact Series
Compatible Fluids	Compressed air, gas, water, water vapour, oil and all fluids compatible with the component materials	
Working Pressure	0 to 30 bar	0 to 35 bar
Working Temperature	-20°C to +130°C	-10°C to +90°C

Reliable performance is dependent upon the type of fluid conveyed.

Component Materials



Silicone-free

Regulations

Industrial

DI: 97/23/EC (module PED A - EC diameters greater than 25 mm)

DI: Machinery Directive 2006/42/EC

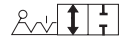
DI: 2002/95/EC (RoHS)

RG: 1907/2006 (REACH)

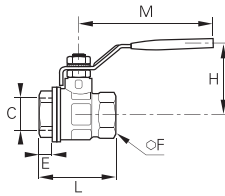
DI: 89/392/EC

Standard Series

4902 2/2 Standard In-Line Ball Valve, Female BSPP Thread



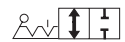
Nickel-plated brass, PTFE



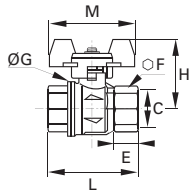
C	DN		PN	E	F	H	L	M	kg
G1/4	10	4902 10 13	30	11	20	43	51.5	98	0.154
G3/8	10	4902 10 17	30	11.4	20	43	51.5	98	0.138
G1/2	15	4902 15 21	30	13.5	25	47	55	98	0.202
G3/4	20	4902 20 27	30	12.5	31	58	57.5	122	0.322
G1	25	4902 25 34	30	15	38	60	69.5	122	0.468
G1¼	32	4902 32 42*	25	17	48	77	81.5	153	0.794
G1½	40	4902 40 49*	25	18	54	83	95	153	1.082
G2	50	4902 50 48*	25	22	66	95	113	162	1.787
G2½	65	4902 65 47*	30	22	85	132	136	255	4.500
G3	80	4902 80 46*	30	25	99	140	157	255	5.840
G4	100	4902 01 45*	30	29	125	154	191	255	9.040

*Models with CE marking
Model from 2½": double stem seal in FPM
Working temperature: -40°C to +170°C

BVGT4-C 2/2 Standard In-Line Ball Valve, Female BSPP Thread



Sand-blasted nickel-plated brass, PTFE



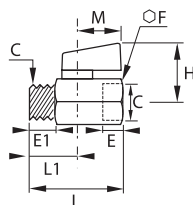
C	DN		E	F	G	H	L	M	kg
G1/4	8	BVGT4-1/4C	9	20	25	40	39	50	0.130
G3/8	10	BVGT4-3/8C	9	20	25	40	39	50	0.120
G1/2	15	BVGT4-1/2C	11	25	32.5	44	50	50	0.180
G3/4	20	BVGT4-3/4C	12	31	39	49	54	50	0.265
G1	25	BVGT4-1C	14	38	47.5	53	67	50	0.390

Compact lever

4991 2/2 Standard Compact In-Line Ball Valve, Male/Female BSPP Thread

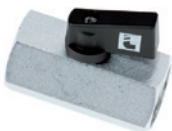
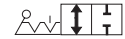


Chromium-plated brass, PTFE

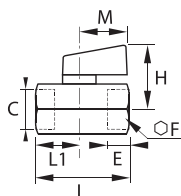


C	DN		E	E1	F	H	L	L1	M	kg
G1/8	6	4991 00 10	10	10	21	30	41.5	10	24	0.091
G1/4	8	4991 00 13	11	11	21	30	41.5	11	24	0.087
G3/8	8	4991 00 17	11	11	21	30	41.5	10.5	24	0.087
G1/2	10	4991 00 21	13	13	25	32	49	12.5	24	0.134

4992 2/2 Standard Compact In-Line Ball Valve, Female BSPP Thread



Chromium-plated brass, PTFE



C	DN		E	F	H	L	L1	M	kg
G1/8	6	4992 00 10	10	21	30	41.5	10	24	0.110
G1/4	8	4992 00 13	11	21	30	41.5	11	24	0.106
G3/8	8	4992 00 17	11	21	30	41.5	10.5	24	0.094
G1/2	10	4992 00 21	13	25	32	49	12.5	24	0.142