

# LF 3000® Push-In Fittings

The LF 3000® range, with its wide variety of shapes and configurations, allows you to find **the perfect product to meet your needs** and thus **optimise the use** of your equipment.

## Product Advantages

### World-Class Performance

- 40 years of expertise
- Full bore for optimum flow
- Ideal for vacuum or pressure applications
- Automatic sealing guaranteed, in both static and dynamic applications
- Materials with high resistance
- Durability of product and equipment

### Optimal Design

- 100% leak-tested in production
- Date coding to guarantee quality and traceability
- Compact and aesthetic design: reduced dimensions for space-saving
- Tube fixed during connection, preventing leakage
- Conforms to ISO 14743
- Excellent vacuum performance thanks to the patented sealing technology
- Lightweight: reduced energy consumption of operating systems
- Parallel threaded fitting with a patented captive O-ring seal
- Maximum flexibility due to the wide product range



- Robotics
- Automotive Process
- Pneumatics
- Semi-Conductors
- Textile
- Packaging
- Vacuum

Applications

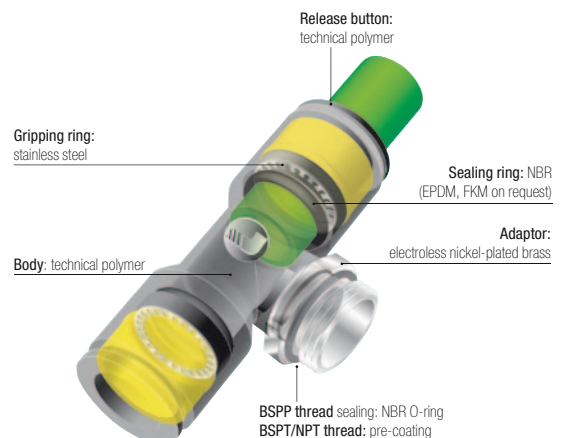
## Technical Characteristics

<b>Compatible Fluids</b>	Compressed air Other fluids: please consult us
<b>Working Pressure</b>	Vacuum to 20 bar
<b>Working Temperature</b>	-20°C to +80°C

Tightening Torque (daN.m)	Threads								
	M3 x0.5	M5 x0.8	M7 x1	M10 x1	M12 x1.5	G1/8	G1/4	G3/8	G1/2
	0.06	0.16	0.8	0.8	1.1	0.8	1.2	3	3.5

Reliable performance is dependent upon the type of fluid conveyed, component materials and tubing being used.  
Use is guaranteed with a vacuum of 755 mm Hg (99% vacuum).

### Component Materials



### Silicone-free

### Regulations

ISO 14743: Pneumatic fluid power, push-in connectors for thermoplastic tubes  
DI: 97/23/EC (PED)

DI: 2002/95/EC (RoHS), 2011/65/EC  
DI: 1907/2006 (REACH)

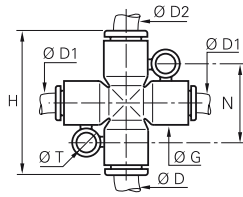
# Tube-to-Tube Fittings


## 3107

### Equal and Unequal Cross



Technical polymer, NBR



ØD	ØD1	ØD2		G	H	N	ØT	kg
4	4	4	<b>3107 04 00</b>	11	36	20	4.2	0.013
6	4	6	<b>3107 04 06</b>	11	36	20	4.2	0.010
4	4	6	<b>3107 06 04</b>	11	36	20	4.2	0.011
6	6	6	<b>3107 06 00</b>	11	36	20	4.2	0.005
8	6	8	<b>3107 06 08</b>	11	46	22.5	4.2	0.018
6	6	8	<b>3107 08 06</b>	13.5	46	22.5	4.2	0.023
8	8	8	<b>3107 08 00</b>	13.5	46	22.5	4.2	0.020

Boxes protect the contents and are designed to meet your requirements:

- part numbers and corresponding product pictures allow for immediate visual identification
- bar codes
- easy storage
- tamper-proof system of opening/closing
- recyclable material

